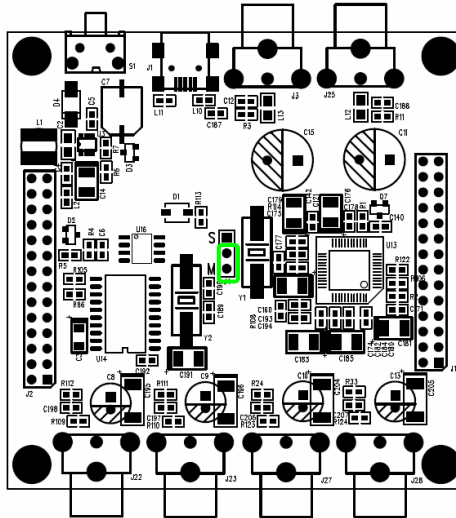


## JUMPER CHART – 2 WAY Configurations

### Warning:

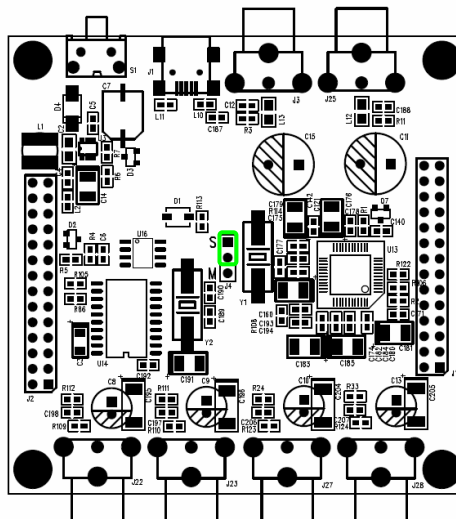
The following jumper chart is not an alternative to reading the user manual of miniDSP, miniDIGI and miniAMP. Because of the potential damage you could create on the board with improper configuration, we expect all readers to carefully follow the user manual instructions to make sure they have a complete understanding of how the system is supposed to operate. These charts are only intended to help you confirm your jumper configuration and not supposed to clarify why a jumper is located at a certain location (read the user manual for that matter).

### 1 ) miniDSP Standalone Configuration – Stereo 2 Way

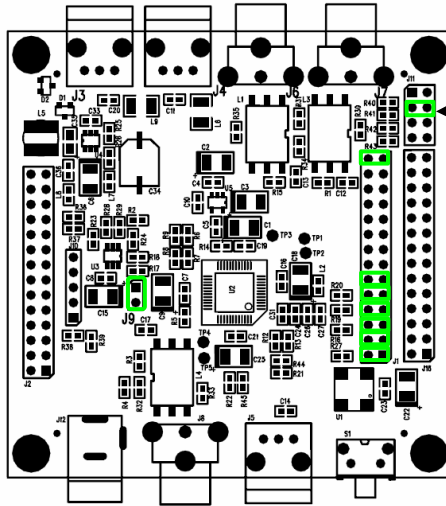


miniDSP board in Default configuration

### 1 ) miniDSP + miniDIGI configuration – Stereo 2 Way



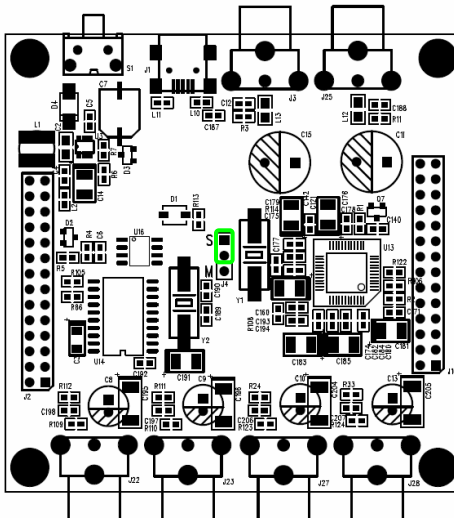
miniDSP board configured in Slave Clock with Center jumper moved.



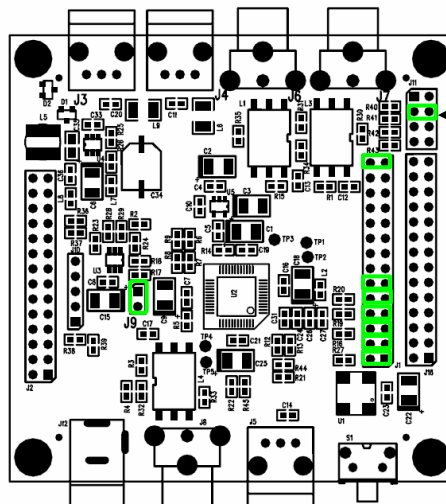
Jumper location To Be Determined depending on Source. See miniDIGI manual for more info.

miniDIGI board configured in I2S Slave with center jumper in place

## 1 ) miniDSP + miniDIGI + miniAMP configuration – Stereo 2 Way

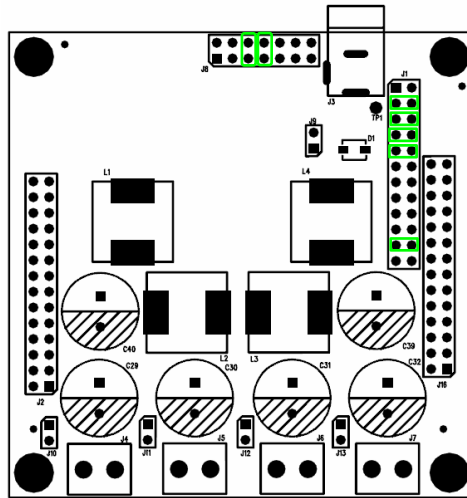


miniDSP board configured in Slave Clock with Center jumper moved.



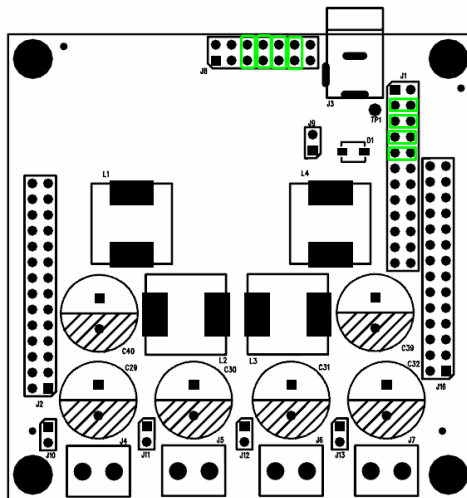
Jumper location To Be Determined depending on Source. See miniDIGI manual for more info.

miniDIGI board configured in I2S Slave with center jumper in place



*miniAMP board in 4x10W Configuration  
Output 1&2, 3&4*

*Refer to miniAMP manual and your plug-in datasheet for more information about I2S routing.*



*miniAMP board in 2x20W Configuration*

*Refer to miniAMP manual and your plug-in datasheet for more information about I2S routing.*