

## FEATURES

### Hardware

- . 2 x SPDIF & 2 x Toslink inputs
- . Buffered SPDIF & Optical outputs
- . Asynchronous Sample rate converter (ASRC) allows wide range of digital signal (up to 216kHz)
- . Easily stack with MiniDSP series
- . SPDIF isolation transformers

### Configuration switches

- . Source selection (1 out of 4 inputs)
- . I2S routing (Select 1xIN, 1xOUT)
- . Master/Slave selection

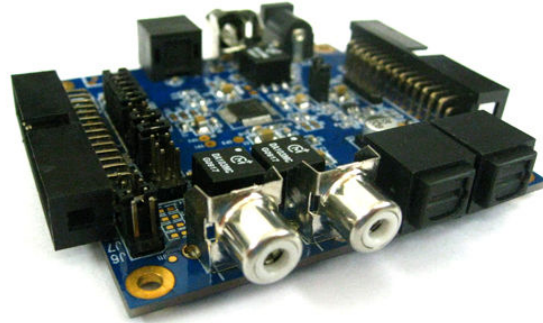
### Power

- . Wide range of power supply voltage from 4.5 to 24Vdc.
- . USB self-powered when used along with miniDSP

### Applications

- . MiniDSP kit I/O expansion
- . DIY audio projects
- . Custom Pro-Audio projects
- . Monitoring speakers
- . Processed multi-channel amplifiers
- . Car audio
- . Home theater system

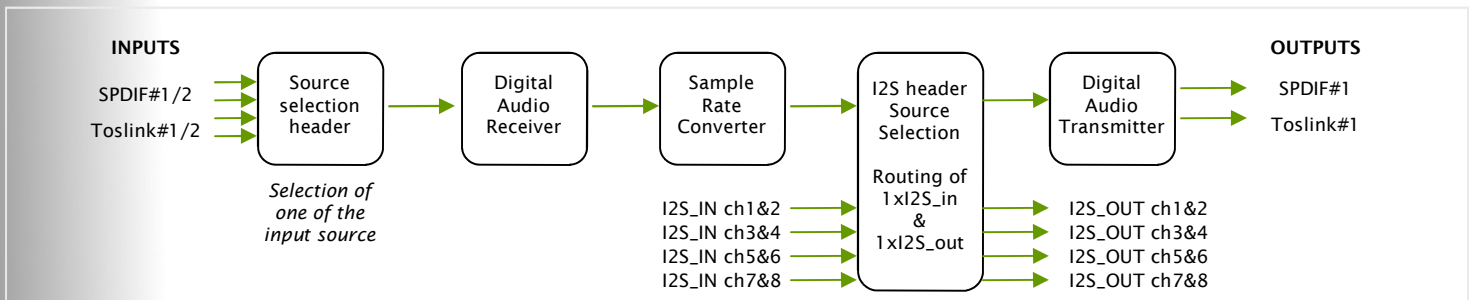
MiniDIGI is an SPDIF/Toslink to I2S interface providing digital audio input & output connectivity for miniDSP kits. Based on the award-winning TI/Burr & Brown IC (SRC4382), the board is automatically configured by a microcontroller for a plug'n'Play standalone solution



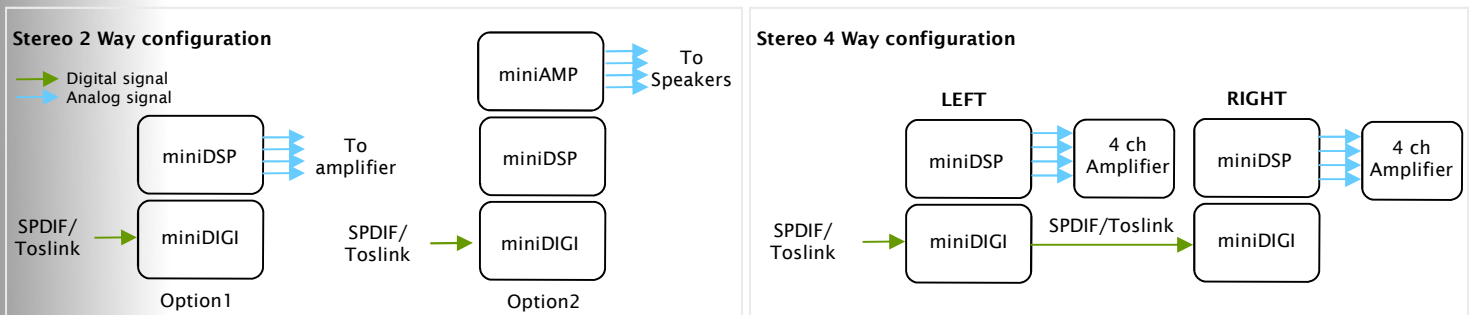
miniDIGI provides unique design freedom without headaches thanks to its Asynchronous Sample Rate Converter allowing up to 216kHz of digital audio input signal. Great common mode noise rejection and impedance matching is provided by SPDIF isolation transformers.

Stack it up, mix & match with other miniDSP cards and build a DSP powered complete digital system in no time!

## miniDIGI diagram



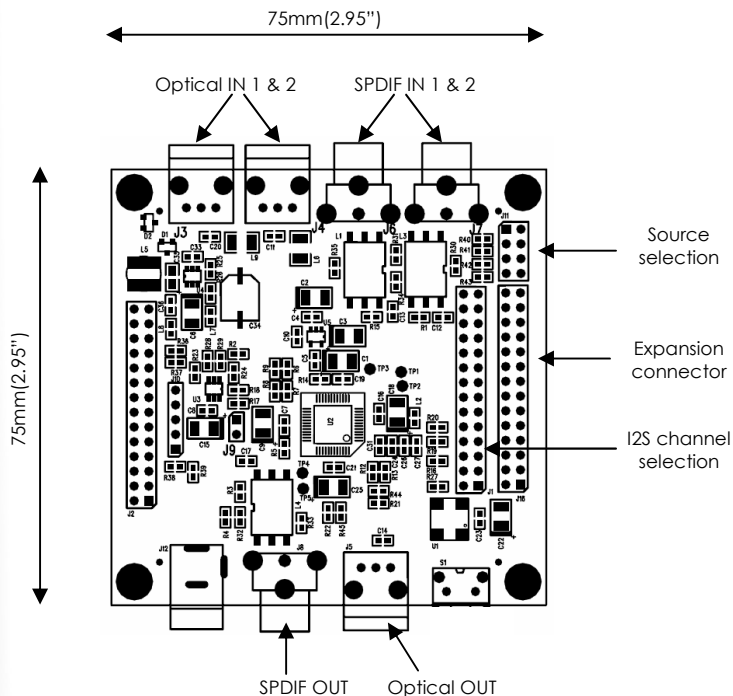
## Template miniDIGI configurations



## TECHNICAL SPECIFICATIONS

Item	Description
Digital Audio inputs	2 x SPDIF on RCA connector, 2 x Optical inputs on Toslink connector
Digital Audio outputs	1 x SPDIF on RCA connector duplicated to 1xToslink optical output
Sample rate converter	Up/Down sample digital audio input signal to miniDSP 48kHz SR
Data resolution	Up to 24 bits
Dynamic range	128dB
THD + N (Full scale input)	- 124dB
Maximum Input Sample Rate	Up to 216kHz
SPDIF Transformer Isolation	Isolation transformer for both inputs and outputs Improves common mode noise rejection, impedance matching, isolation from ground loops and short circuit protection
I2S Master/Slave configuration	Self programmed with I2S Master/Slave configuration
I2S channel configuration	Select which I2S channel you want to route the digital input/output signal. See miniDIGI user manual for more details about configuration
Source selection header	Select one of the four digital inputs (SPDIF1/2, Toslink1/2) with a jumper
Power supply	4.5~24Vdc input DC connector, 2.5mm connector - (150mA @5Vdc) Automatically provides power to other stacked miniDSP boards
Dimensions (H x W x D)	75mm x 75mm (3"x3")

## MECHANICAL SPECIFICATIONS & EXPANSION CONNECTOR PIN OUT



### Source Selection Header Select only 1 out of 4 inputs

Position	Description
1	SPDIF #1
2	SPDIF #2
3	Optical #1
4	Optical #2

### I2S Channel configuration

Position	Description
1	I2S_IN Ch1&2
2	I2S_IN Ch3&4
3	I2S_IN Ch5&6
4	I2S_IN Ch7&8
5	I2S_OUT Ch1&2
6	I2S_OUT Ch3&4
7	I2S_OUT Ch5&6
8	I2S_OUT Ch7&8

## ORDERING

SKU	Description
800-221	miniDIGI with 2 x SPDIF in, 2 x Toslink in, 1 x SPDIF out, 1 x Toslink out